



UNIVERSITY OF CALIFORNIA
Agriculture and Natural Resources



Training and Demo

Elizabeth Lopez
Robert Tapia

CalFresh Healthy Living UCCE
Fresno/ Madera Counties

What is Nearpod?

It's a way to both enhance your lessons and engage students.



UNIVERSITY OF CALIFORNIA
Agriculture and Natural Resources

California's CalFresh Healthy Living, with funding from the United States Department of Agriculture's Supplemental Nutrition Assistance Program – USDA SNAP, produced this material. These institutions are equal opportunity providers and employers. For important nutrition information, visit www.CalFreshHealthyLiving.org

Why use Nearpod?

- Nearpod + Google Drive
- Launch Live or Student-Paced lessons
- Nearpod generates reports
- Engages the learner
- Fun!



Want to Learn More?

nearpod.com/resources

You receive certificates for attending live webinars!

The screenshot shows the top navigation bar of the Nearpod website. The 'Live Webinars' link is highlighted with a green arrow pointing down. Below the navigation bar, the main heading reads 'Attend a live webinar'. A sub-heading says 'Seeing is believing! Come see the Nearpod magic in action and get ideas you can take back to your school and classroom.' There are two featured webinar cards. The first is titled 'Using Nearpod with Google' and includes a 'Register' button. The second is titled 'Transform Student Engagement with Nearpod' and also includes a 'Register' button. A third card is partially visible at the bottom, titled 'Plan, Create and Edit a Nearpod Lesson'.



UNIVERSITY OF CALIFORNIA
Agriculture and Natural Resources

California's CalFresh Healthy Living, with funding from the United States Department of Agriculture's Supplemental Nutrition Assistance Program – USDA SNAP, produced this material. These institutions are equal opportunity providers and employers. For important nutrition information, visit www.CalFreshHealthyLiving.org

Camp Engage!

Aug 3-14
2020

Our FREE virtual summer PD experience is back for another year.

We're excited to bring you content and activities to take you into the next school year feeling connected, inspired, and ready for what's next.

Sign up

WELCOME BACK CAMPERS!

nearpod Flocabulary

Planning for the new normal

Passive to active learning

Healthy and inclusive learning environments

Being an edtech leader

Attend the Nearpod Summer Camp
Sign up at <https://nearpod.com/camp-engage>

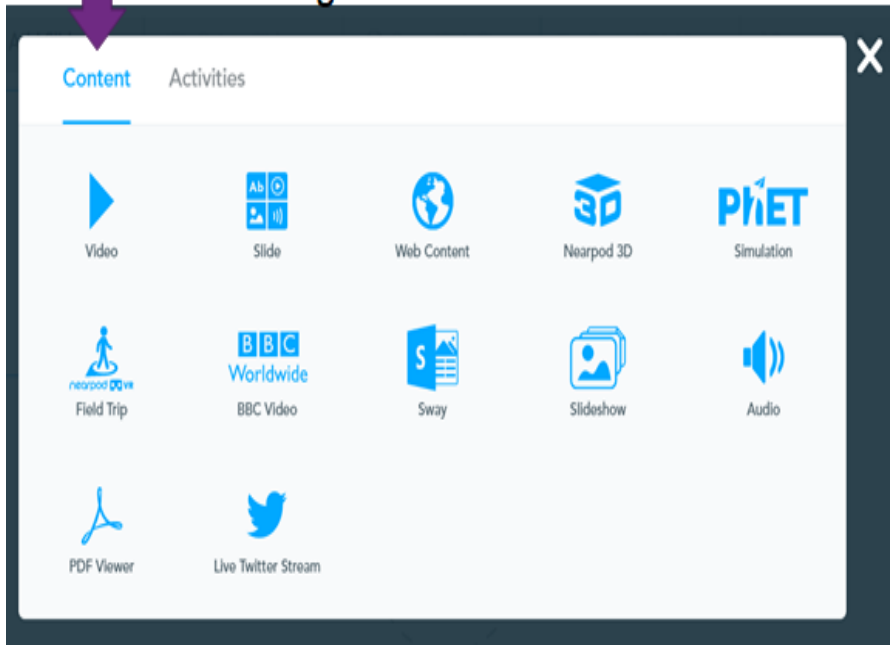
Using Nearpod

The screenshot shows the Nearpod library interface. On the left is a dark sidebar with navigation options: 'Join a lesson' with a text input 'Enter CODE', 'Nearpod Library', 'My Library' (highlighted), 'Reports', and 'Teacher Resources'. The main content area has a 'My Library' header with a search bar containing the text 'Search lessons in your library'. Below this is a 'My Lessons' section with a 'Sort by: Recent' dropdown. The main content area is divided into three columns. The first column contains a search icon and the text 'Explore our lessons and add one for FREE'. The second column is titled 'Create your own:' and contains two buttons: 'Lesson in Nearpod' and 'Lesson in Google Slides'. The third column shows a 'Demo' lesson by Elizabeth Lopez from Jul 23, 2020, with a size of 3MB. Below the demo title is a preview of a lesson slide titled 'Circle your favorite food group.' with a 'Draw It' button and a drawing icon.

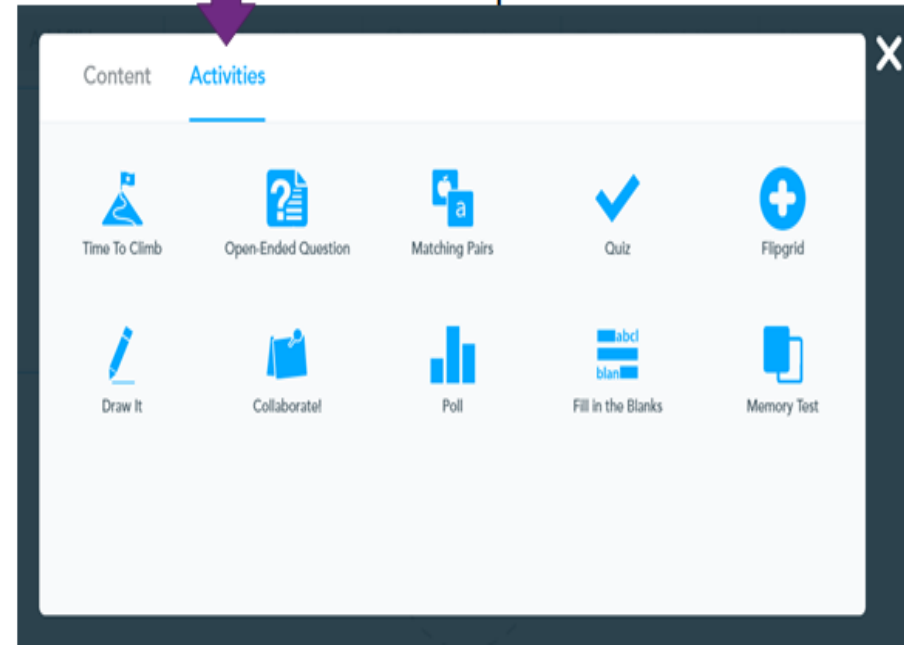
<https://nearpod.com/signup/>

Enhancing Your Lesson

Allows you to add video, slides to support student learning.

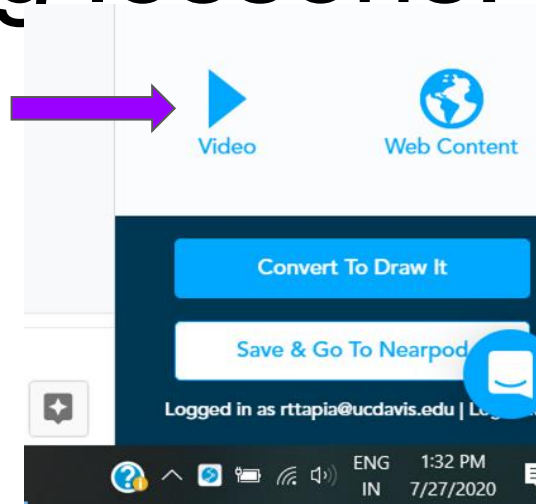


Allows you to add activity features to enhance the student experience.

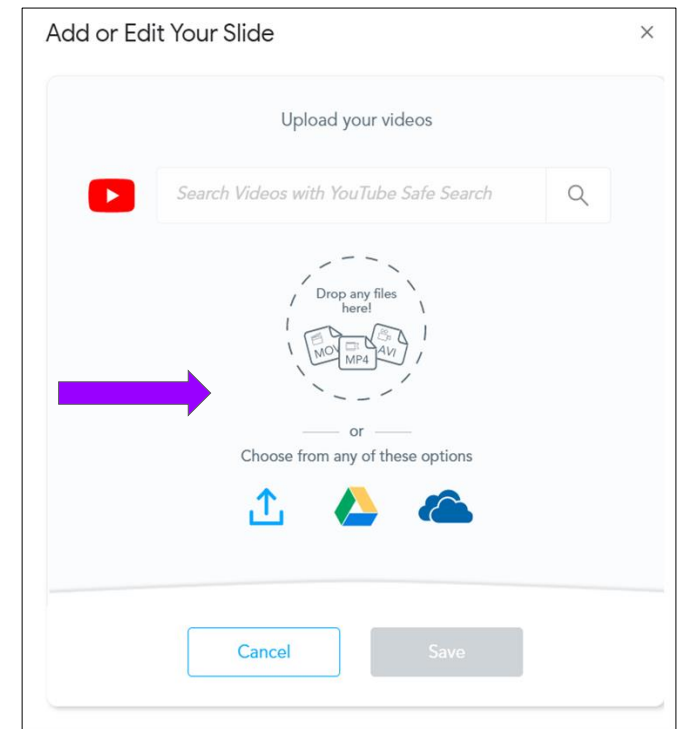


Enhancing lessons: Adding Video

Click on video
in the bar on
the right

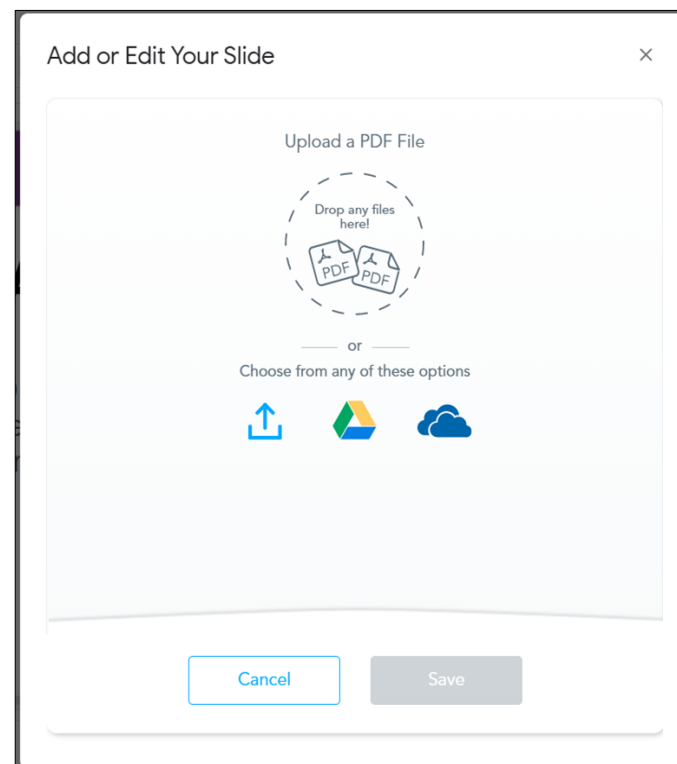
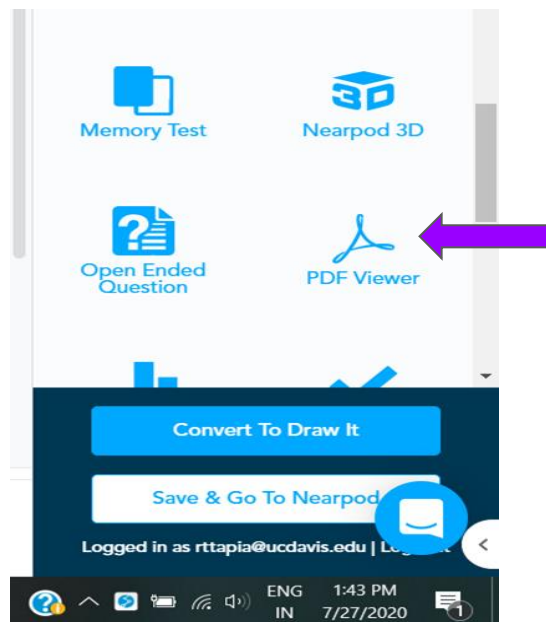


Search for videos on
YouTube, or add video
from your computer,
Google Drive, or OneDrive



Adding PDFs

Click on add PDF Viewer from the NearPod add on bar



Add PDFs from your computer, Google Drive, or OneDrive

Breakout Rooms

You will get hands on experience with a Nearpod Activity. (5 minutes)

- Robert: Collaborate!
- Elizabeth: Matching Pairs
- Hannah: Poll
- Melanie: Draw It
- Anna: Fill in the Blanks

Questions

Please email us

Robert Tapia

rttapia@ucanr.edu

Elizabeth Lopez

erlopez@ucanr.edu



UNIVERSITY OF CALIFORNIA
Agriculture and Natural Resources

California's CalFresh Healthy Living, with funding from the United States Department of Agriculture's Supplemental Nutrition Assistance Program – USDA SNAP, produced this material. These institutions are equal opportunity providers and employers. For important nutrition information, visit www.CalFreshHealthyLiving.org